

OEBB 2022-23 Open Enrollment: Dental Plans



Delta Dental of Oregon & Alaska



Delta Dental plans overview

- There are no changes to the coinsurances to the existing plan designs. We will continue to offer plans 1,5,6, the Exclusive PPO and the Exclusive PPO – incentive plan.
- Both Exclusive PPO plans DO NOT include out-of-network benefit coverage. If you are enrolled in either of these plans, you must see a Delta Dental PPO provider for benefits to be covered.
- *NEW!* Effective 10/1/22, OEGB added the Preventive First program. This means preventive services will no longer accrue towards the annual benefit maximum, leaving additional dollars to use for basic and major services.

Delta Dental plan options

Plan options	Plan 1	Plan 5	Plan 6	Exclusive PPO – Incentive plan ²	Exclusive PPO Plan ²
Network	Delta Dental Premier			Delta Dental PPO	Delta Dental PPO
Deductible	\$50	\$50	\$50	\$50	\$50
Benefit maximum	\$2,200	\$1,700	\$1,200	\$2,300	\$1,500
Out-of-network benefits included	Yes	Yes	Yes	N/A	N/A
In-network, members pay					
Preventive/diagnostic ¹	30% - 0%	30% - 0%	0%	0%	0%
Restorative	30% - 0%	30% - 0%	20%	30%-0%	10%
Major restorative - crowns/onlays	30% - 0%	30%	50%	30% - 0%	20%
Prosthetic -implants	30% - 0%	50%	50%	30% - 0%	20%
Orthodontic (lifetime maximum - \$1,800)	20%	20%	N/A	20%	20%
Occlusal guards (night guards ³ and athletic mouth guards)	50%	50%	50%	50%	50%
Nitrous oxide	50%	50%	50%	50%	50%

¹ Preventive care does not accrue towards the annual benefit maximum

² The Delta Dental Exclusive PPO plans has no out-of-benefit. Services performed by providers outside of the Delta Dental PPO network are no covered unless for dental emergency. Covered emergencies consist of problem focused exam, palliative treatment, and x-rays. All other services are considered non-covered.

³ \$250 maximum, once every 5 years



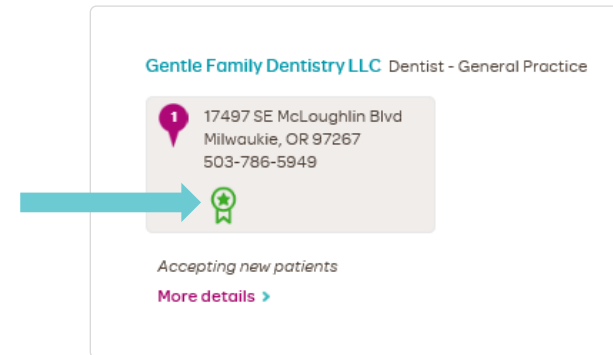
Delta Dental Networks

- The Delta Dental Premier Network (Plans 1, 5 and 6) is the largest dental network in Oregon and nationwide
 - Over 2,200 providers in Oregon and over 154,000 providers nationwide
- The Exclusive PPO plan uses the Delta Dental PPO Network
 - Over 1,200 providers in Oregon and over 113,000 providers nationwide
 - You must use a Delta Dental PPO provider
 - There are no out-of-network benefits for these plans

Health through Oral Wellness[®] (HtOW)

- All OEBB members have access to the HtOW program
 - Patient-centered wellness program that helps members maintain better oral health through a risk assessment, education and additional evidence-based preventive care
- Providers participating in the program use an oral health assessment to find out the member's risk of tooth decay, gum disease and oral cancer
- Members may qualify for the following services depending on their risk score:
 - Additional cleanings
 - Fluoride treatment
 - Sealants
 - Periodontal maintenance
 - Nutritional counseling

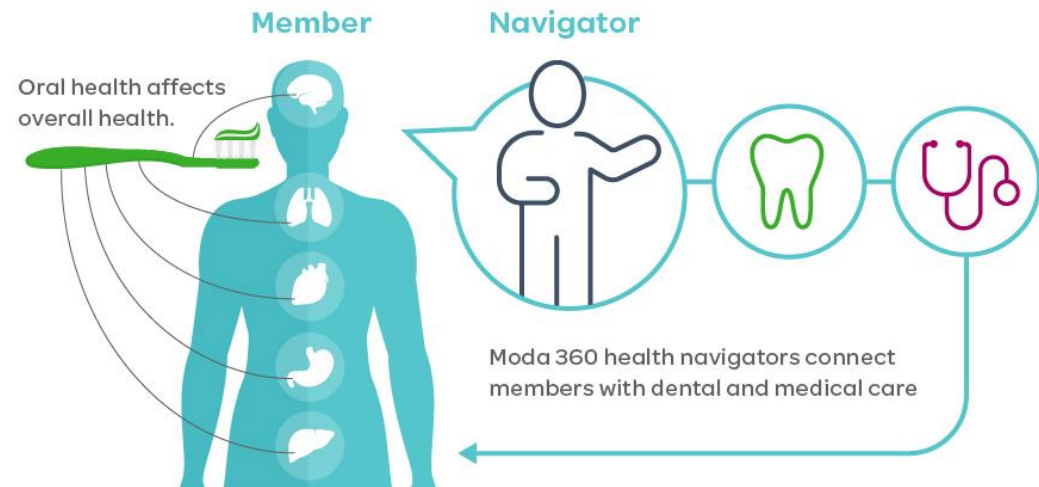
- To see which providers are participating in HtOW, members can look for a green badge shown in Find Care



- If your provider is not registered for HtOW, you can have them call our Health through Oral Wellness provider line: **844-663-4433**
- For more details on HtOW – please visit our website at: deltadentalor.com/oralwellness/members/

moda 360 | Dental integration

- We are adding dental integration to our Moda 360 program
- If you are enrolled in a Moda Health medical and Delta Dental plan, you will be connected to a Moda 360 Health Navigator
- The Health Navigator can help you with:
 - Claims and provider billing support
 - Finding providers
 - Connections to providers participating in the Health through Oral Wellness[®] program
 - Connections to appropriate programs, tools and resources



Find Care – Delta Dental’s online provider directory

OEBB Open Enrollment

OEBB members
Plan materials
Coordinated Care
Moda 360
Behavioral health
Health Through Oral Wellness
Additional Cost Tier
Reference Price Program
Pharmacy services
Wellness resources
Find Care
Find a doctor, dentist, pharmacy or clinic

Member Dashboard
USERNAME
PASSWORD
Forgot your password
Forgot your username
Create an account

Find Care
Find a doctor, dentist, pharmacy or clinic

OEBB members, experience healthcare that revolves around you
Powered by **moda 360**

Moda Health and Delta Dental of Oregon are making it easier to choose and use the right plan for you and your family. Our health plans give you better benefit choices, better care and our largest network - Connexus. Plus, you get our Moda 360 team of Health Navigators to connect you with the care, resources and programs that will work best for you.

2021-22 Pharmacy updates

- As a reminder, we changed our pharmacy benefits manager to Navitus on Oct. 1, 2021. Please make sure to share your new ID card or the following information with your pharmacy:
 - PCN: NVT
 - BIN: 610602
 - Rx group: OEBB
- To find an in-network pharmacy click here:
 - 2022 NW Prescription Drug Consortium Core network

Moda 360 - your own enhanced member support team
Healthcare can be complicated. That's why we created Moda 360. Every time you call the Moda Health OEBB number on the back of your ID card, you will be connected to a Health Navigator. The Health Navigator will not only answer any questions you may have, but will also serve as

Search for a provider

Welcome, guest | Search as a member

Type of search
Dental

Need a dentist outside of Oregon and Alaska? Visit the [Delta Dental](#) website.

Network
Delta Dental Premier

Name of provider
Enter doctor name

Specialty
Dentist - General Practice

Location
Portland OR 97210
10 miles

More search options
 Accepting new patients Teledentistry provider

Search

Malmquist, Ida Dentist - General Practice

Distance: 1.9 mi
2267 NW Pettygrove St
PORTLAND, OR 97210
503-224-6317

Accepting new patients
In-office visits
[More details](#)

Network:
Providers may not be in all networks or a PCP at every location. See [details](#) for more information.
Delta Dental Premier



Delta Dental of Oregon & Alaska

Your Moda 360 Health Navigators

Available Monday through Friday from 7:30 a.m. to 5:30 p.m. Pacific time.



Medical/Vision
866-923-0409



Pharmacy
866-923-0411



Dental
866-923-0410

Or email Moda at OEBBquestions@modahealth.com.

You can also message a Health Navigator instantly through your [Member Dashboard](#).

Thank you



Delta Dental of Oregon & Alaska